



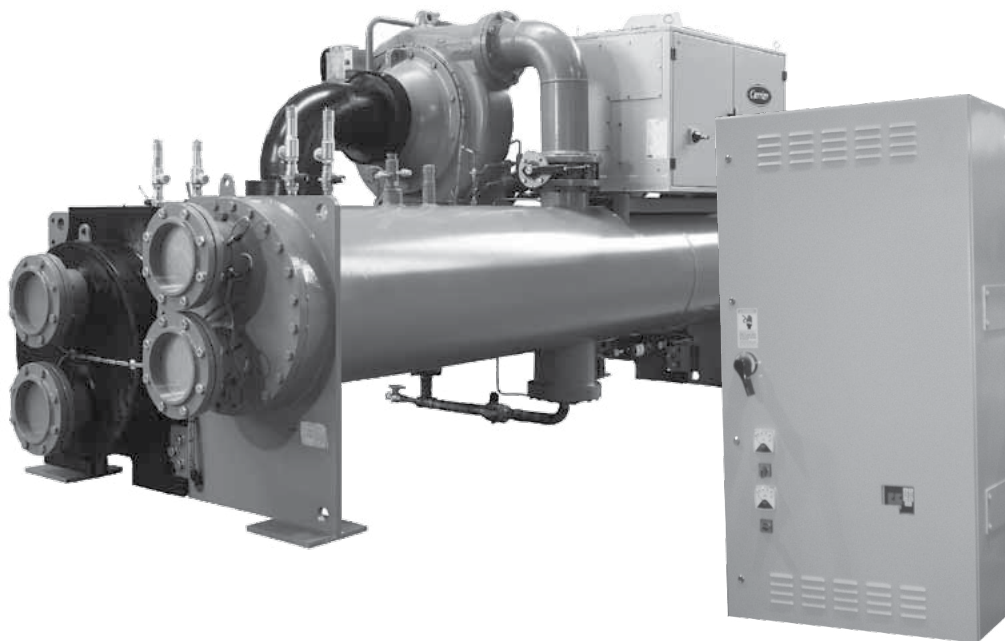
APPLICATION NOTE

APP #144

Revision History

Date	Author	Description
2-18-2020	DEW	Setup
05-06-2020	DEW	Add photo, minor change pg 5 & 6

CARRIER 19XRV ROCKWELL LIQUIFLO 1 RETROFIT



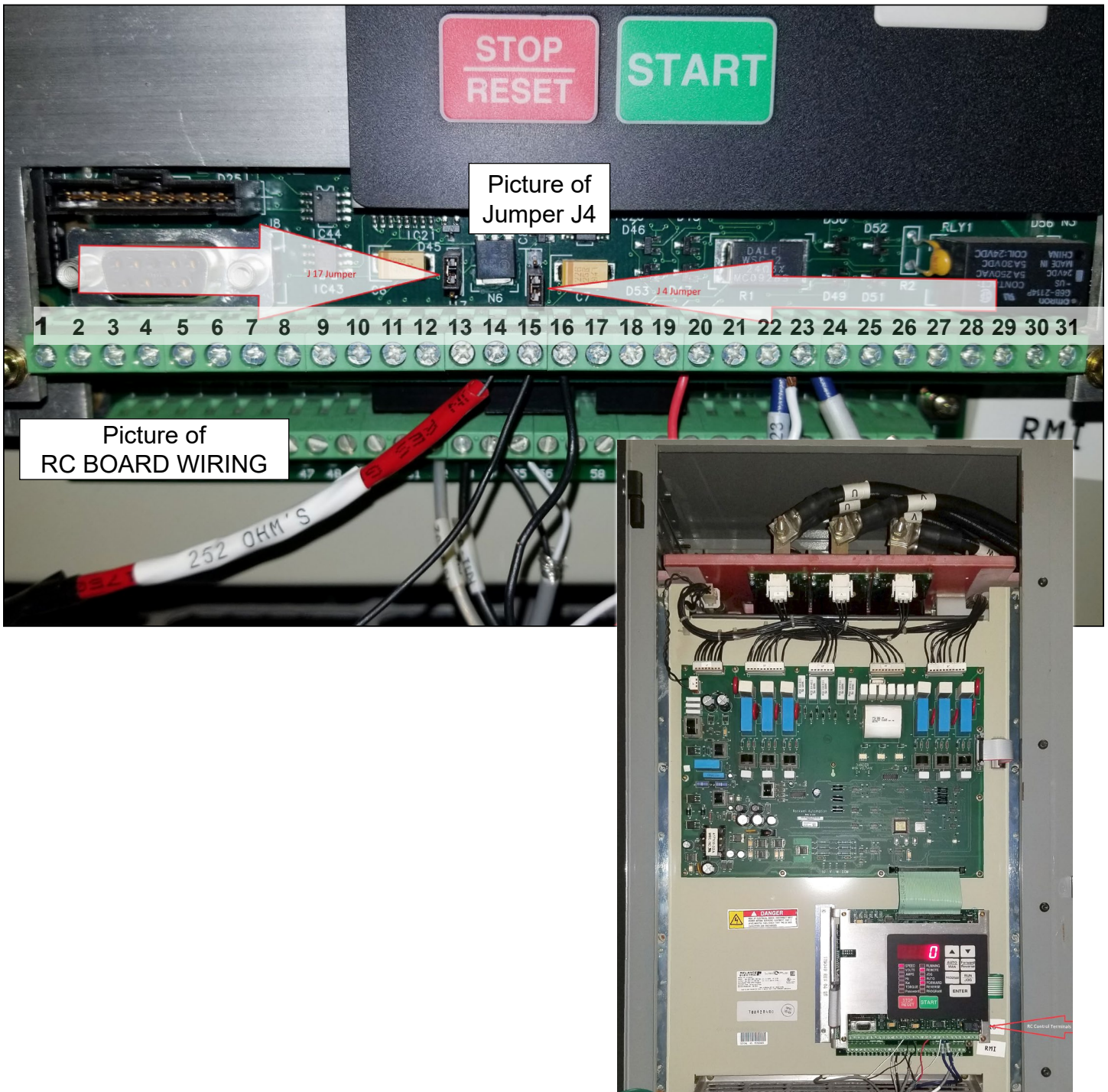
Any questions regarding this release, contact: support@mcscontrols.com

Micro Control Systems, Inc. 5580 Enterprise Parkway Fort Myers, Florida 33905
(239)694-0089 FAX: (239)694-0031 www.mcscontrols.com

Information contained in this document has been prepared by Micro Control Systems, Inc. and is copyright © protected 2017.
Copying or distributing this document is prohibited unless expressly approved by MCS.

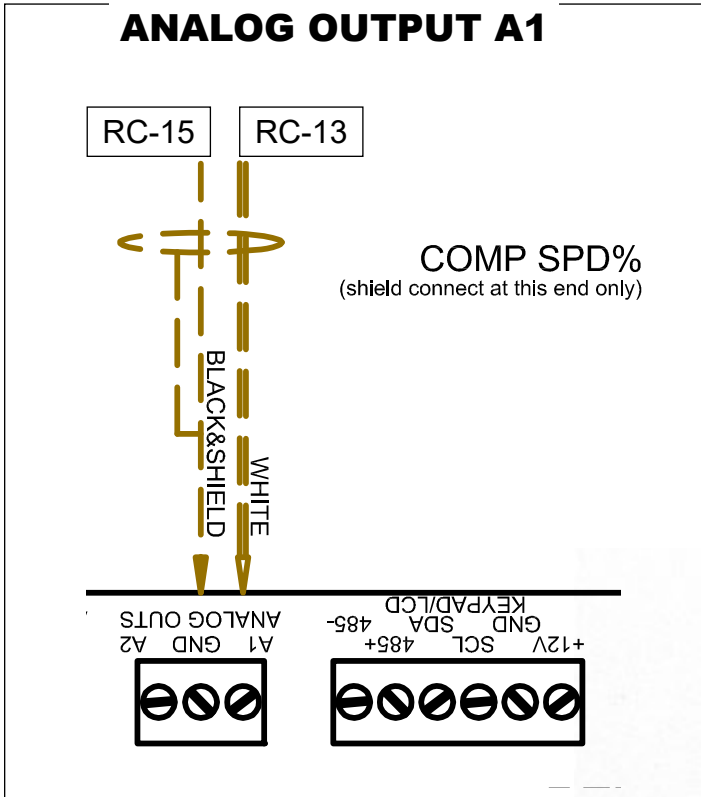
NOTES AND JUMPER SETTINGS

1. Put the J4 jumper on the top 2 pins:
2. Change parameter 'P.011' to '0' for 0-10Vdc input. Default should be 4.
3. Photo J4 jumper and finished wiring to the Rockwell RC Board as explained on the following pages:



MCS WIRING COMPRESSOR SPEED

MCS-MAGNUM ANALOG OUTPUT A1



WIRING

MAGNUM A1 to RC TERMINALS

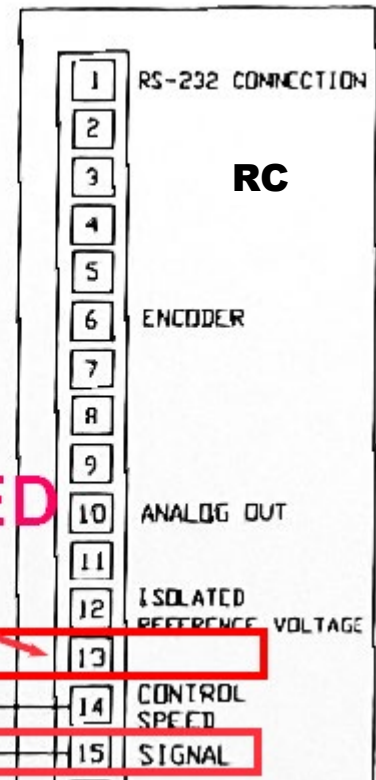
Analog Output - COMP SPD%

A1 - RC-13
GND - RC-15

CARRIER RC TERMINALS

#13 - Actual Control Speed
#15 - Signal

CARRIER RC TERMINALS



A0-A1 SPEED

#13 Actual Control Speed terminal

#14 NOT USED

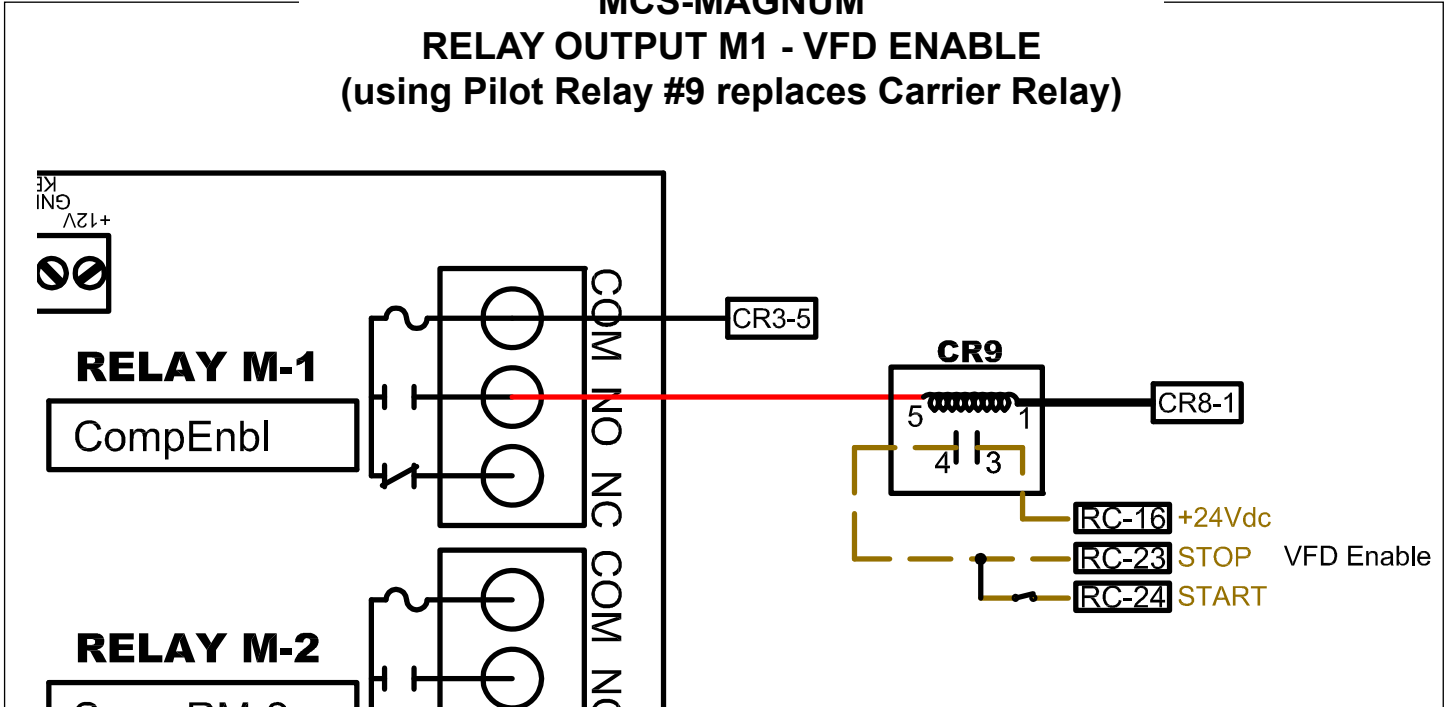
ISM JB-1

ISM JB-2



MCS WIRING VFD ENABLE

MCS-MAGNUM RELAY OUTPUT M1 - VFD ENABLE (using Pilot Relay #9 replaces Carrier Relay)



WIRING

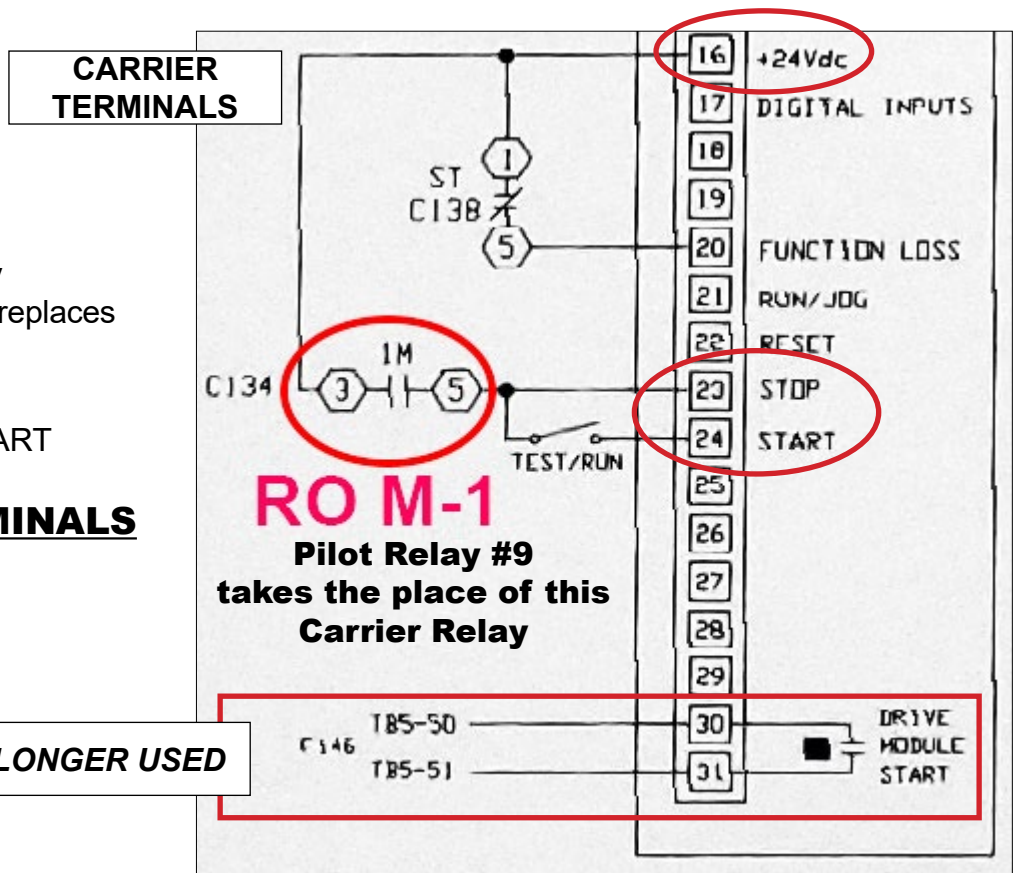
MAGNUM M1 - Relay
(using Pilot Relay #9, replaces Carrier Relay)

CR9-3 - +24Vdc
CR9-4 - STOP / START

CARRIER TERMINALS

#16 - +24Vdc
#23 - STOP
#24 - START

THIS IS NO LONGER USED



MCS WIRING SHUNT TRIP

MCS-RO EXTENSION RELAY OUTPUT 2-4 - SHUNT TRIP

WIRING

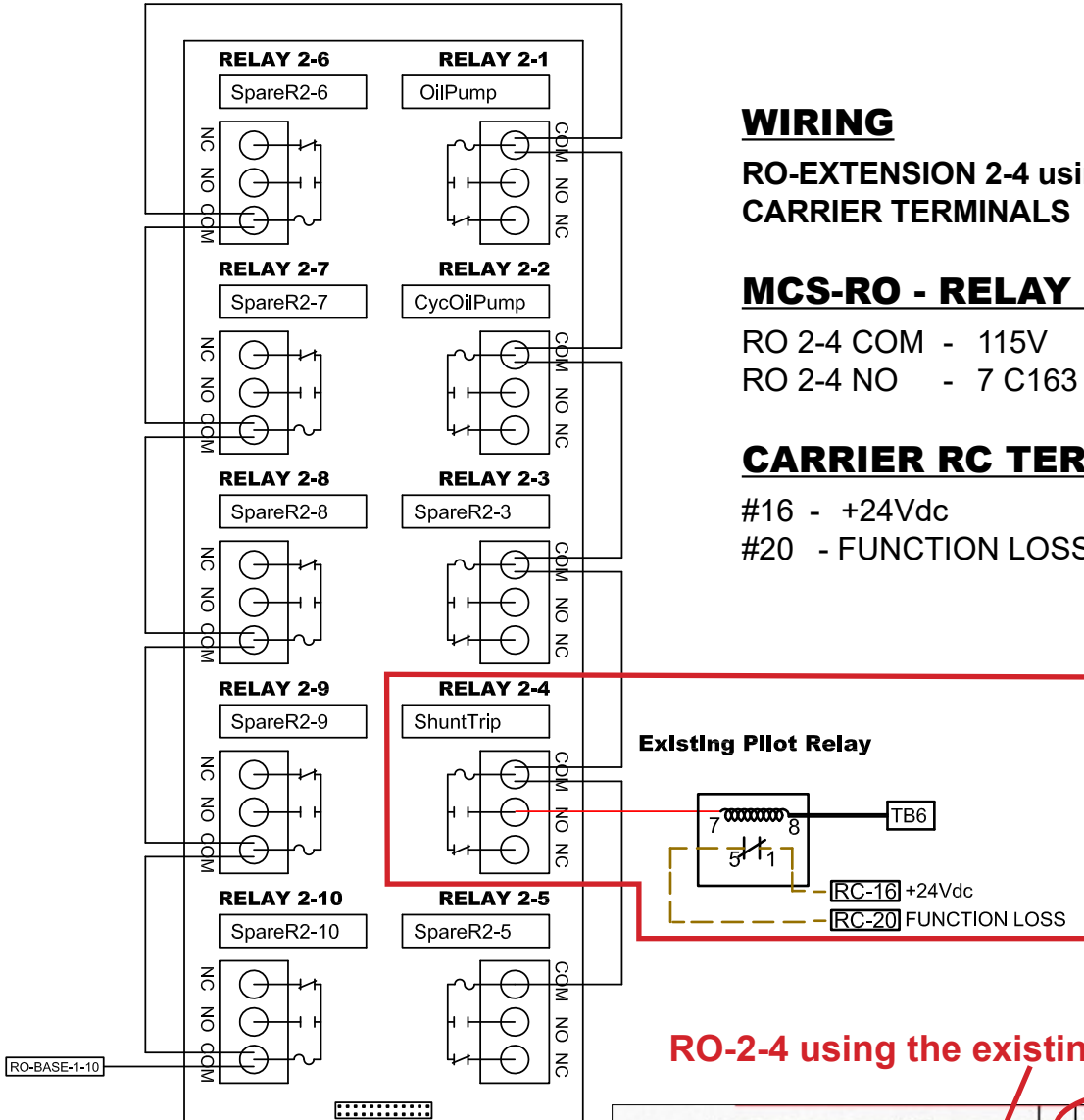
RO-EXTENSION 2-4 using Pilot Relay
CARRIER TERMINALS

MCS-RO - RELAY 2-4

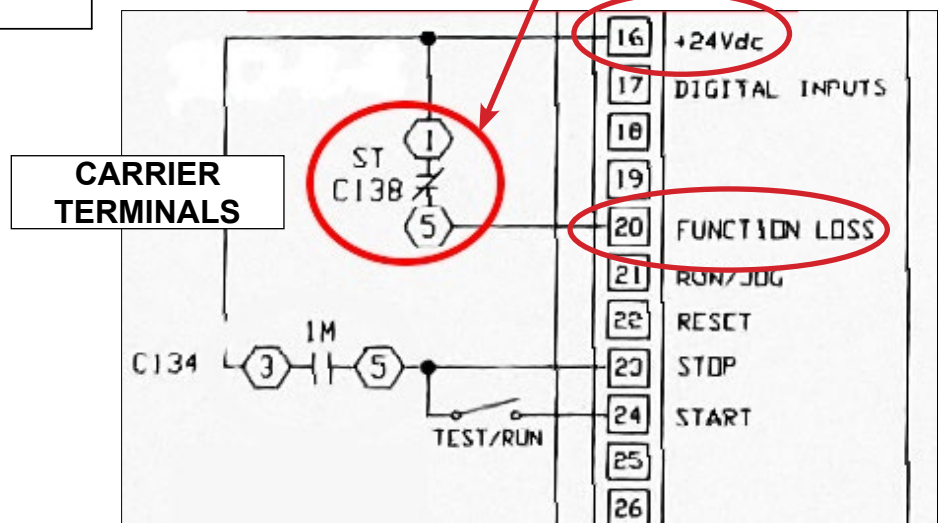
RO 2-4 COM - 115V
RO 2-4 NO - 7 C163 Shunt Trip Pilot Relay

CARRIER RC TERMINALS

#16 - +24Vdc
#20 - FUNCTION LOSS

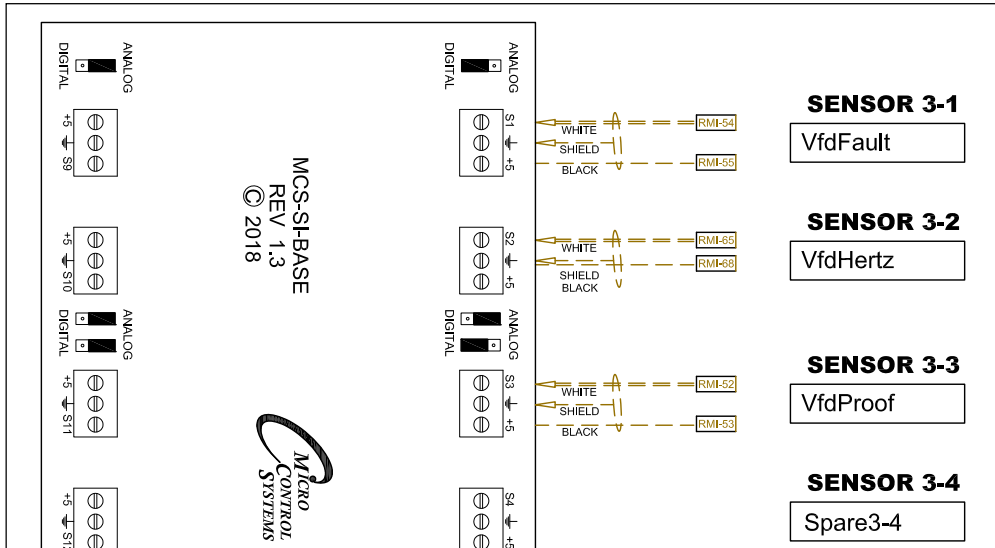


RO-2-4 using the existing Pilot Relay



MCS WIRING

VFD FAULT, HERTZ AND PROOF



WIRING

THE ROCKWELL LIQUIFLO 1 FEEDBACK TO THE MCS INPUTS

SENSOR 3-1 INPUT VFD FAULT

- 3-1 S1 - RMI - #54
- 3-1 +5 - RMI - #55

SENSOR 3-2 INPUT VFD HERTZ

- 3-2 S2 - RMI - #65
- 3-2 GND - RMI - #68

SENSOR 3-3 INPUT VFD PROOF

- 3-3 -S3 - RMI - #52
- 3-3 +5 - RMI - #53

